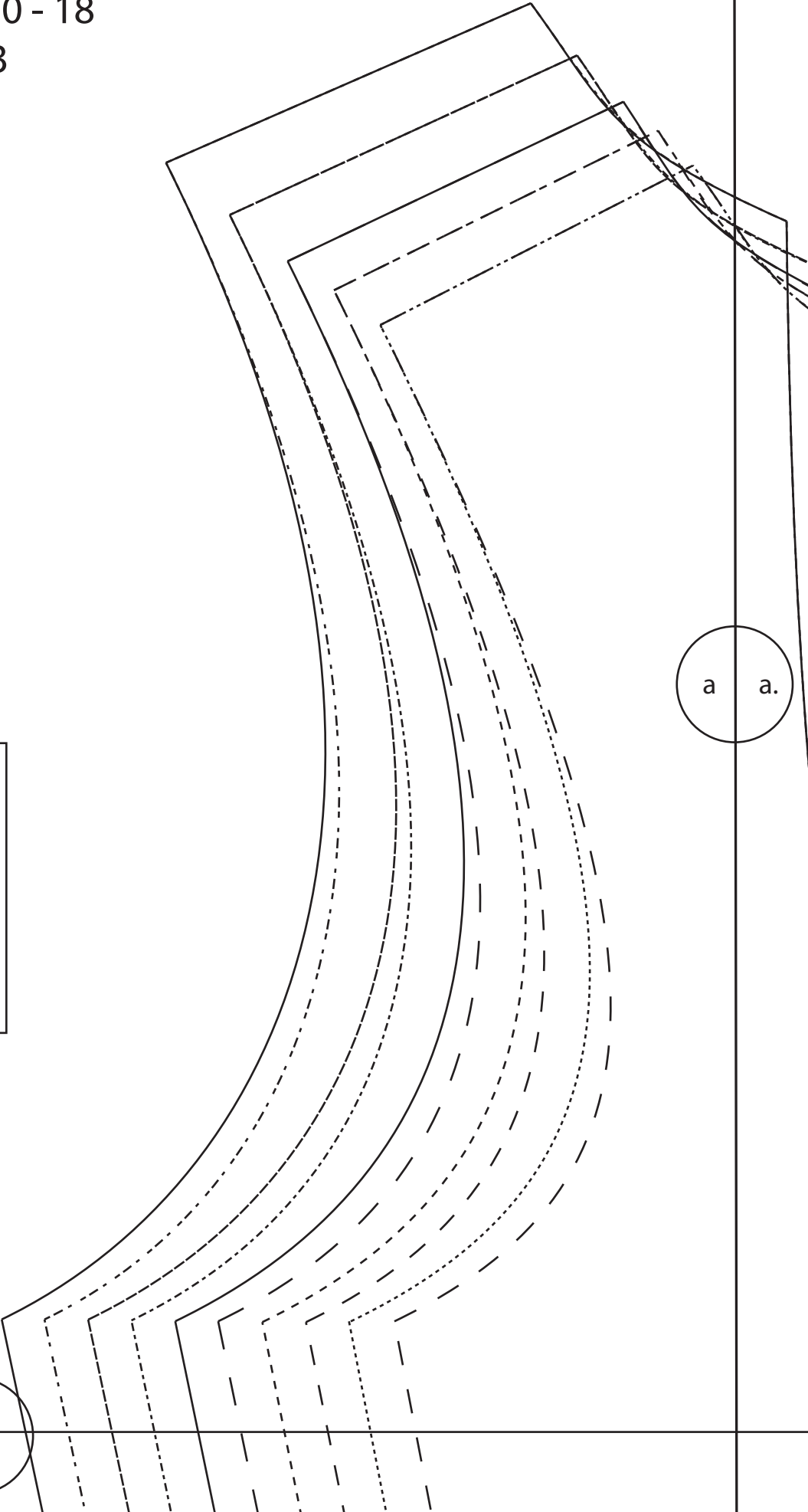
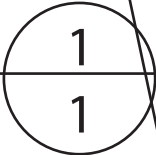
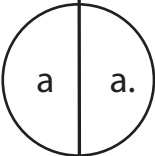
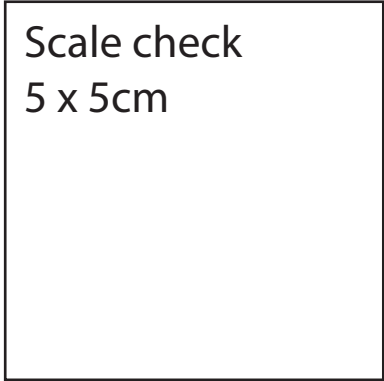
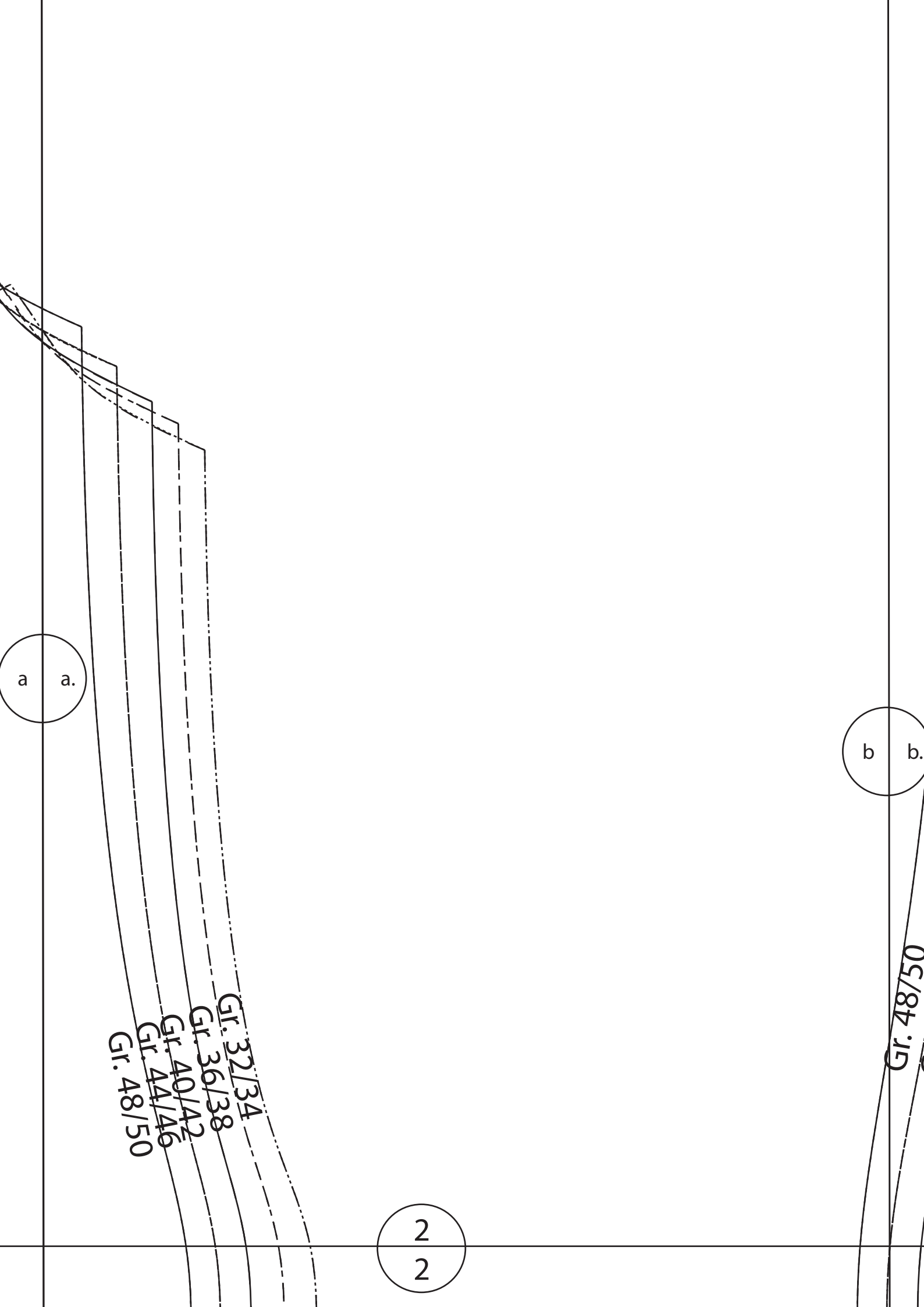
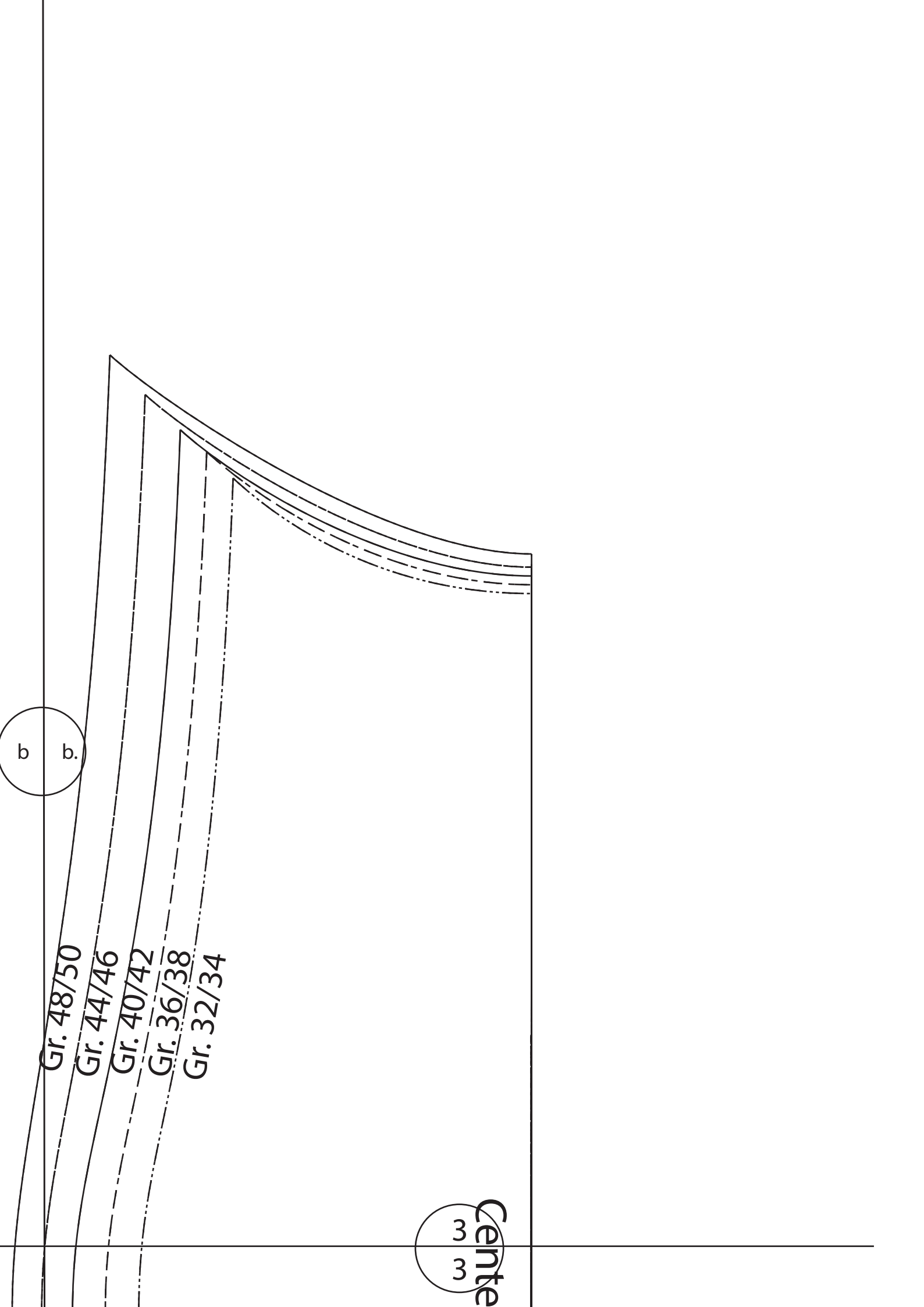


Front pieces A - C Cup pages 1 - 9
Front pieces D - F Cup pages 19 - 27
Back pieces pages 10 - 18
Sleeve pages 28 - 33
Hood pages 34 - 38
Collar pages 39 - 40







c.

c

Grainline

4

4

Gr. 32

Gr. 34

Gr. 36

Gr. 38

Gr. 40

Gr. 42

Gr. 44

Gr. 46

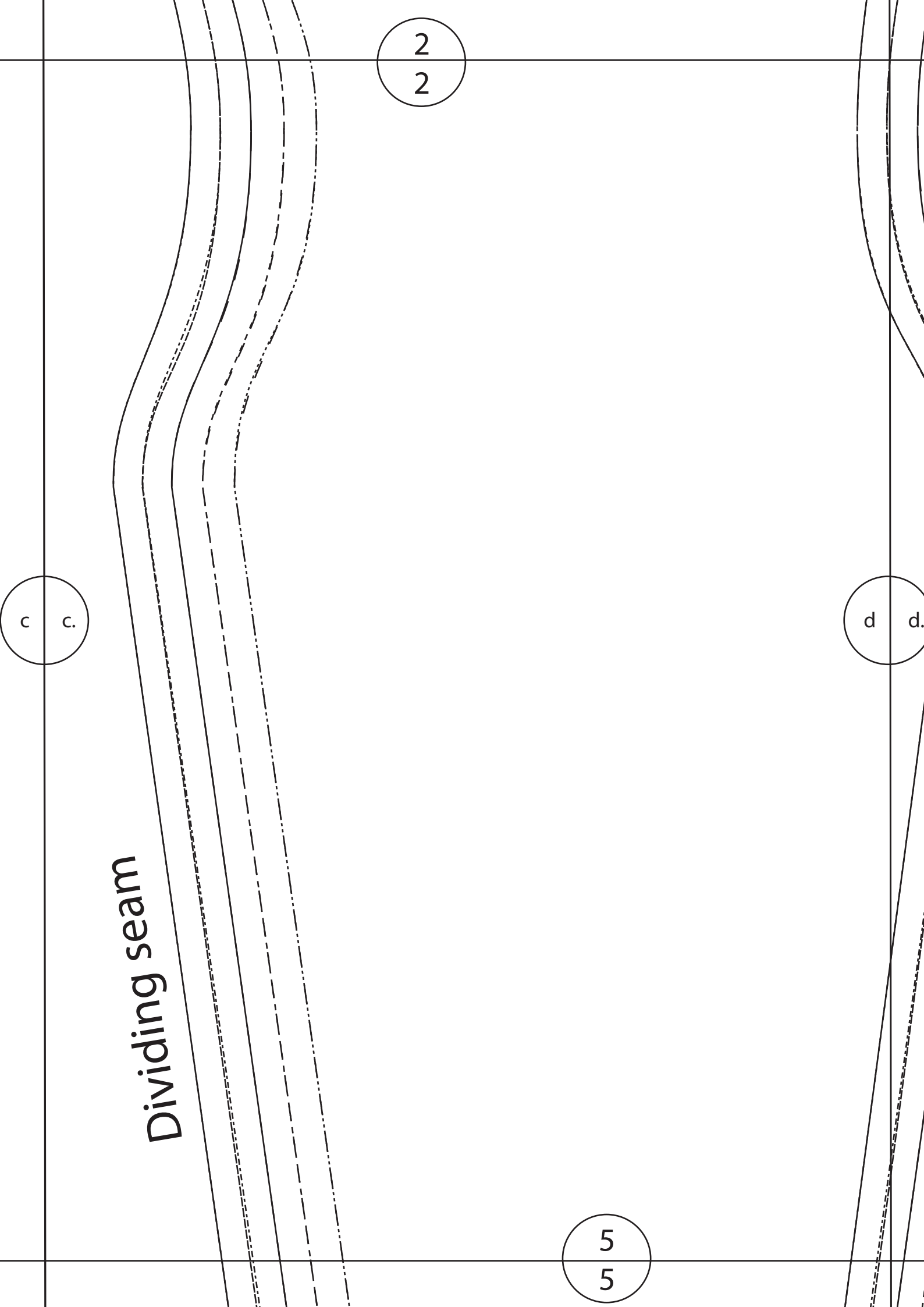
Gr. 48

Gr. 50

seams

1

1



Dividing seam

c c.

d d.

2
2

5
5

Center front

3

3

Grainline

Dividing seam

d.

d

6

6

Side seam

4
4

SEWER

Pully by Sewera A - C

Cut 2 mirror images

Side front piece

Sewing pattern does **NOT** include seam allowance

Please add: 0.5 - 1cm / 1/8 - 3/8 inch

Hemline: 1 - 4 cm / 3/8 - 1,5 inch

e

e.

5

5

ERA

a A - C Cup
ages

include seam allowance!
- 3/8 inch
5 inch

e

e.

f

f.

6

6

SE WERA

Pully by Sewera A - C Cup

Cut 2 mirror images

Middle front piece

Sewing pattern does **NOT** include seam allowance!

Please add: 0.5 - 1cm / 1/8 - 3/8 inch

Hemline: 1 - 4 cm / 3/8 - 1,5 inch

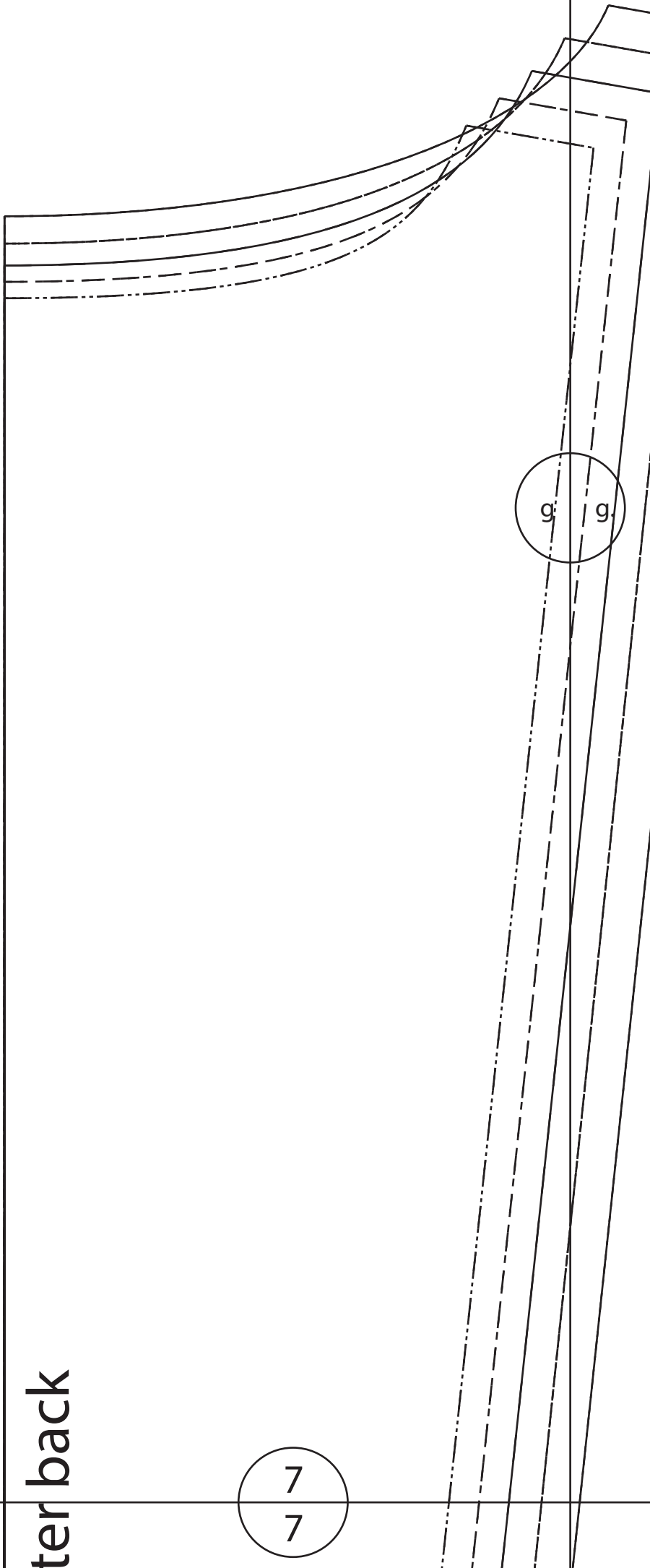
f

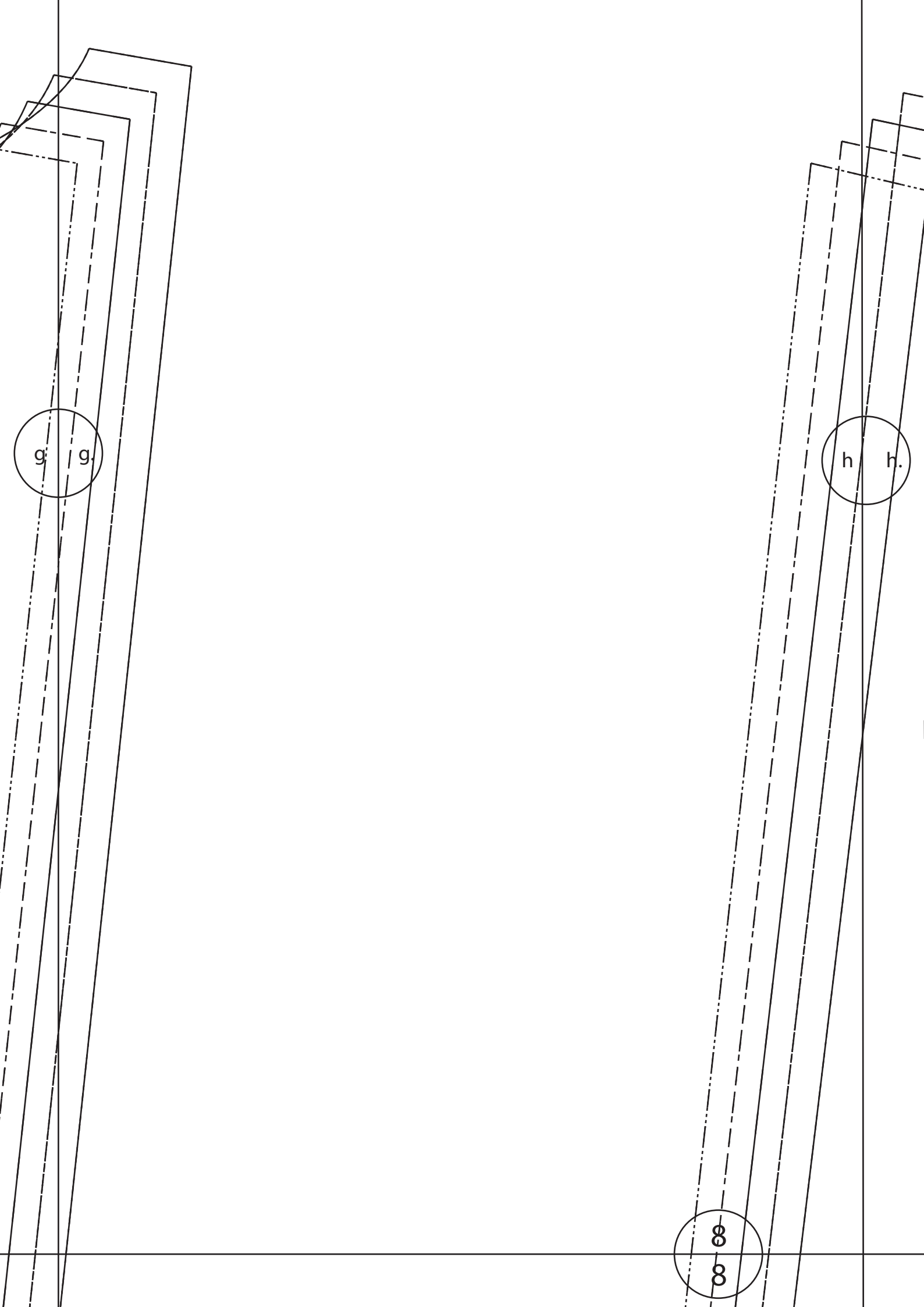
f.

ter back

7
7

g
g

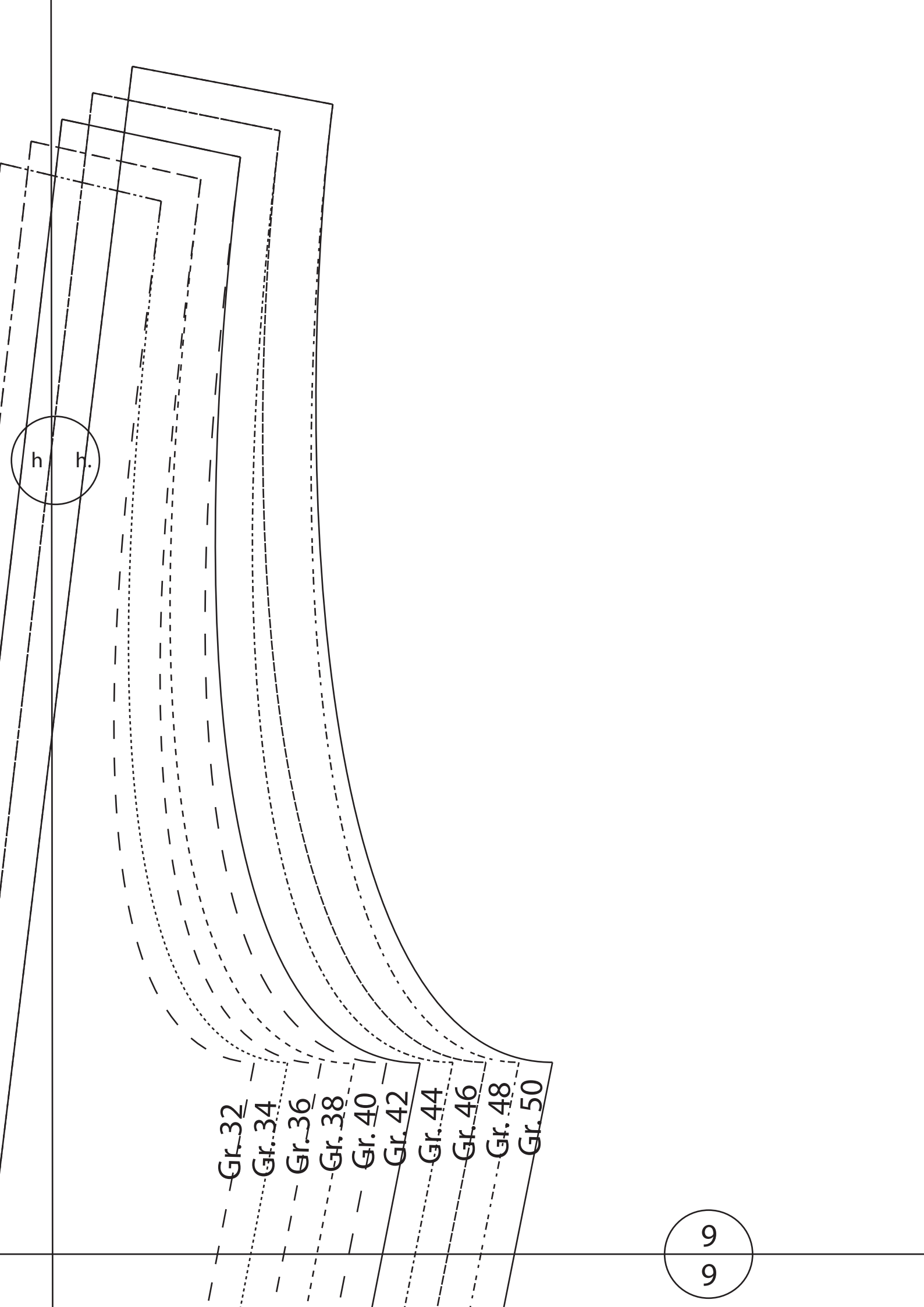




g g

h h.

∞
∞



Gr. 32

Gr. 34

Gr. 36

Gr. 38

Gr. 40

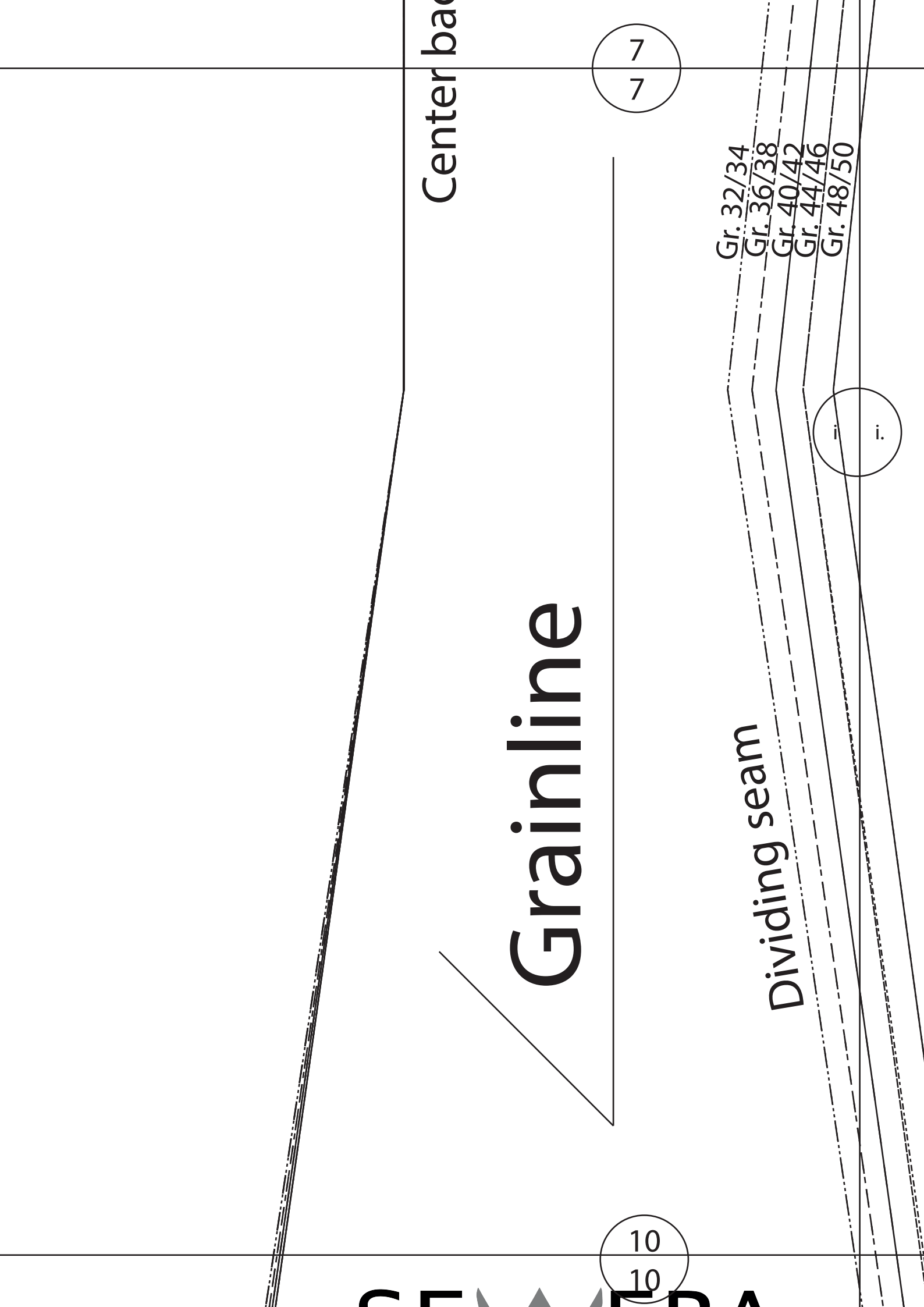
Gr. 42

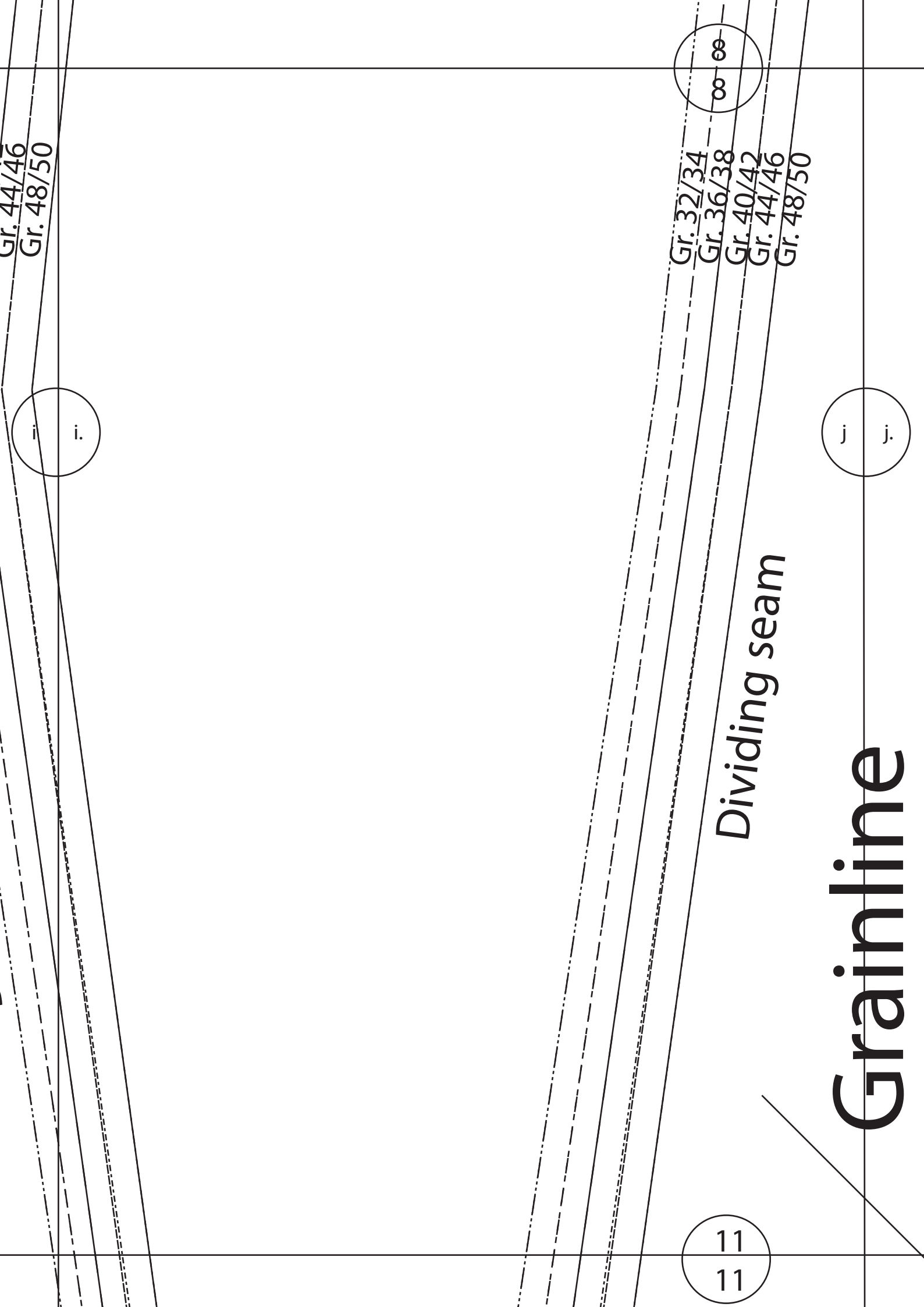
Gr. 44

Gr. 46

Gr. 48

Gr. 50

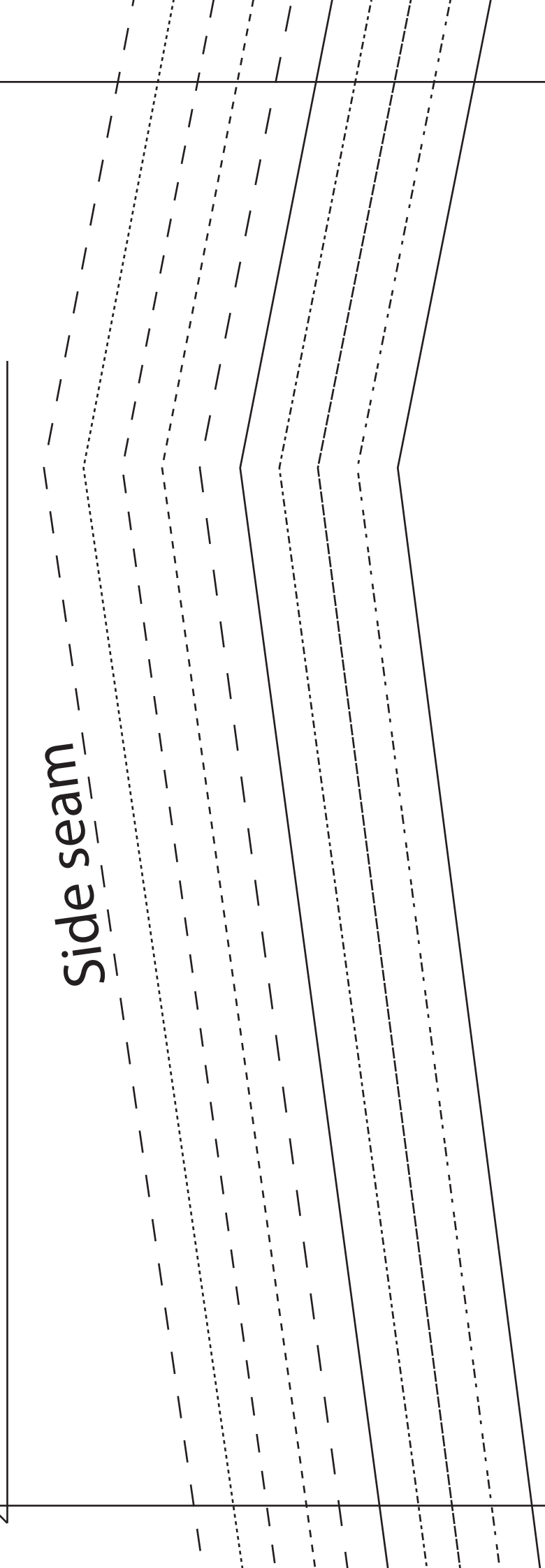




Grainline

j j.

side seam



9
9

12
12

SEWERA

10

10

Pully by Sewera

Cut 2 mirror images

Middle back piece

Sewing pattern does **NOT** include seam allowance!

Please add: 0.5 - 1 cm / 1/8 - 3/8 inch

Hemline: 1 - 4 cm / 3/8 - 1,5 inch

k

k.

11
11



Pully by Sewera

Cut 2 mirror image

Side back piece

Sewing pattern does **NOT** include

Please add: 0.5 - 1 cm / 1/8 - 1/4 inch

Hemline: 1 - 4 cm / 3/8 - 1,5 inch

k k.

l l.

12

12



Sewera

error images

piece

does **NOT** include seam allowance!

5 - 1cm / 1/8 - 3/8 inch

cm / 3/8 - 1,5 inch

I

I.

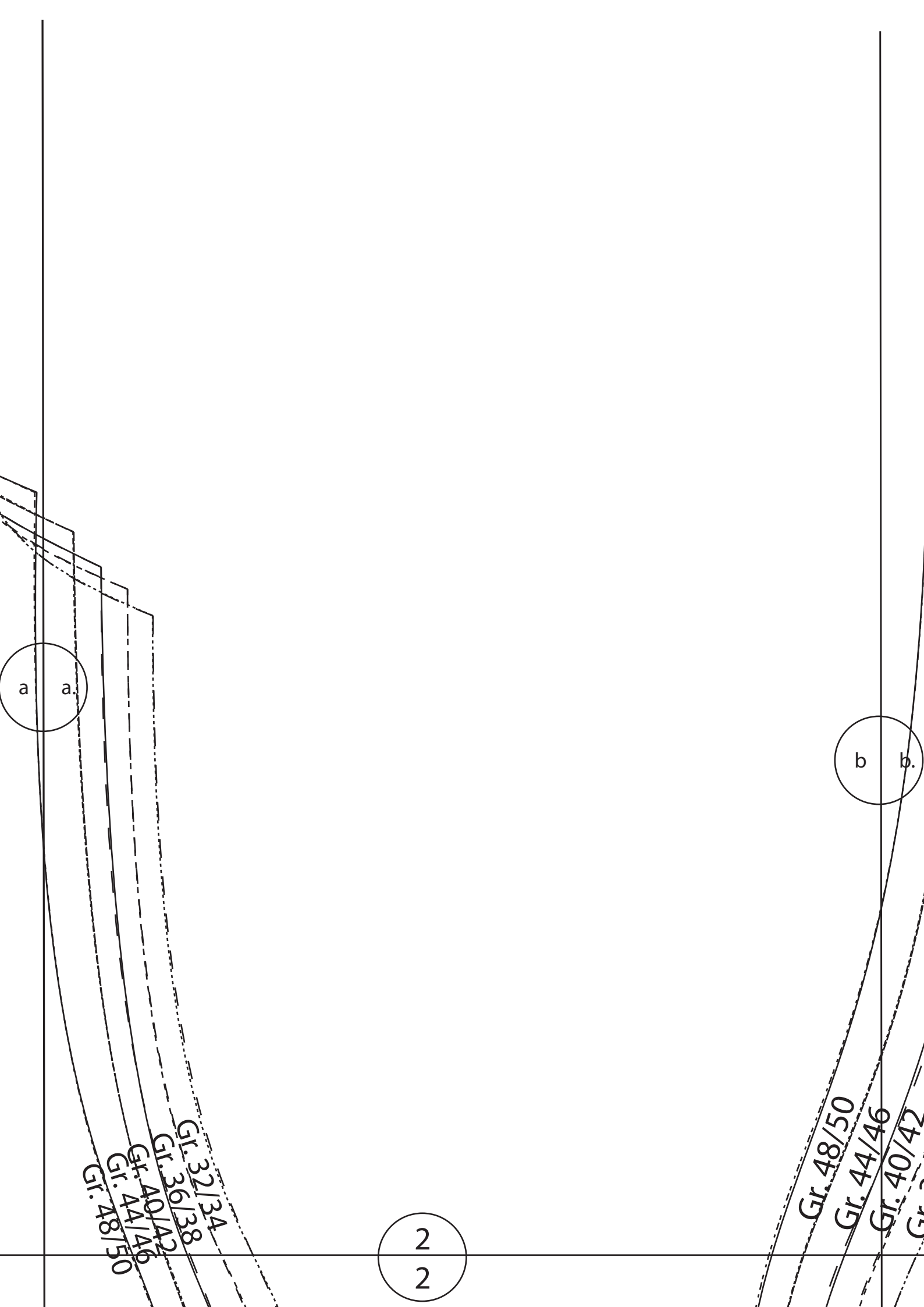
Scale check
5 x 5cm

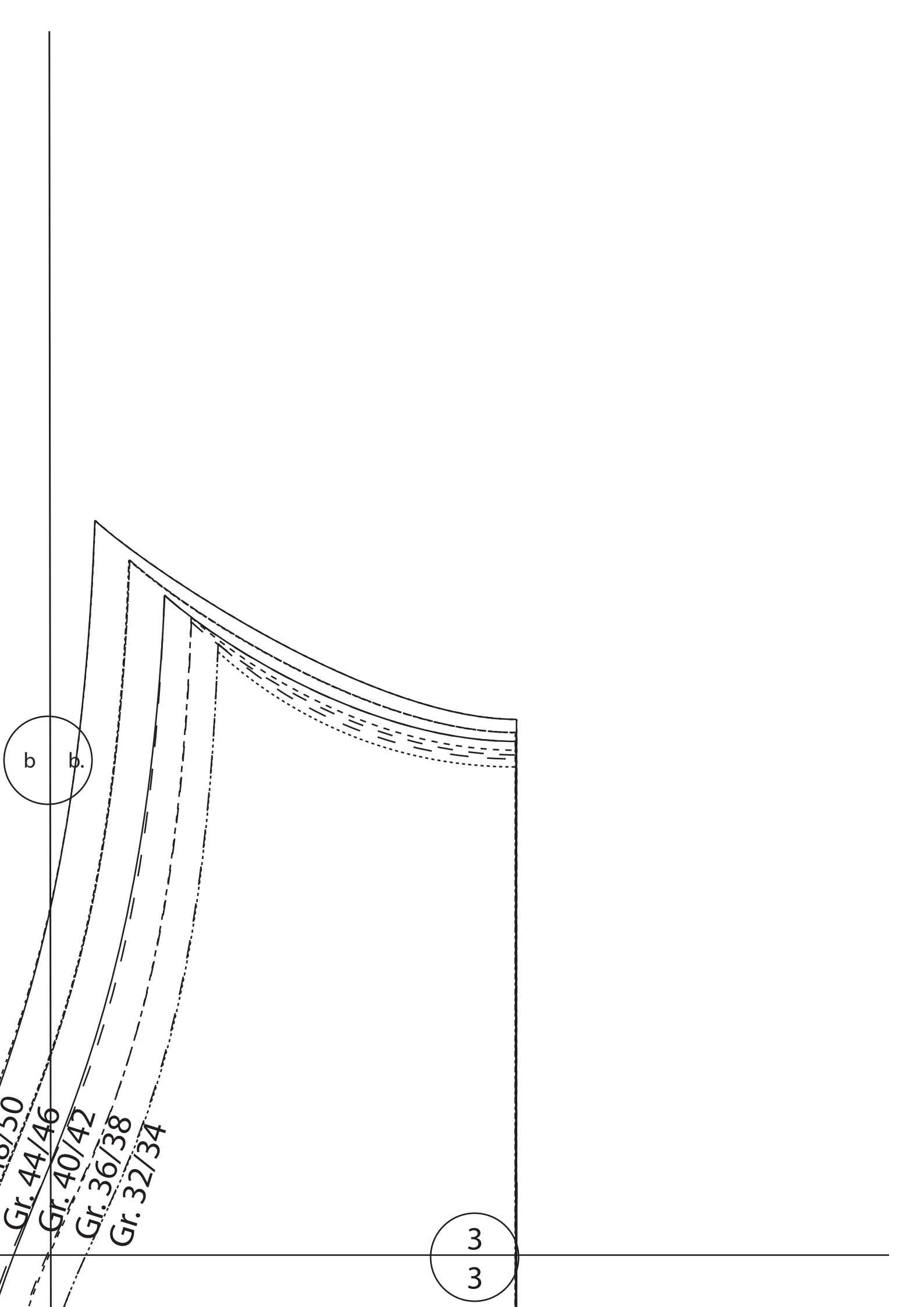
a

a.

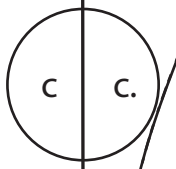
1
1

Gl.: 1

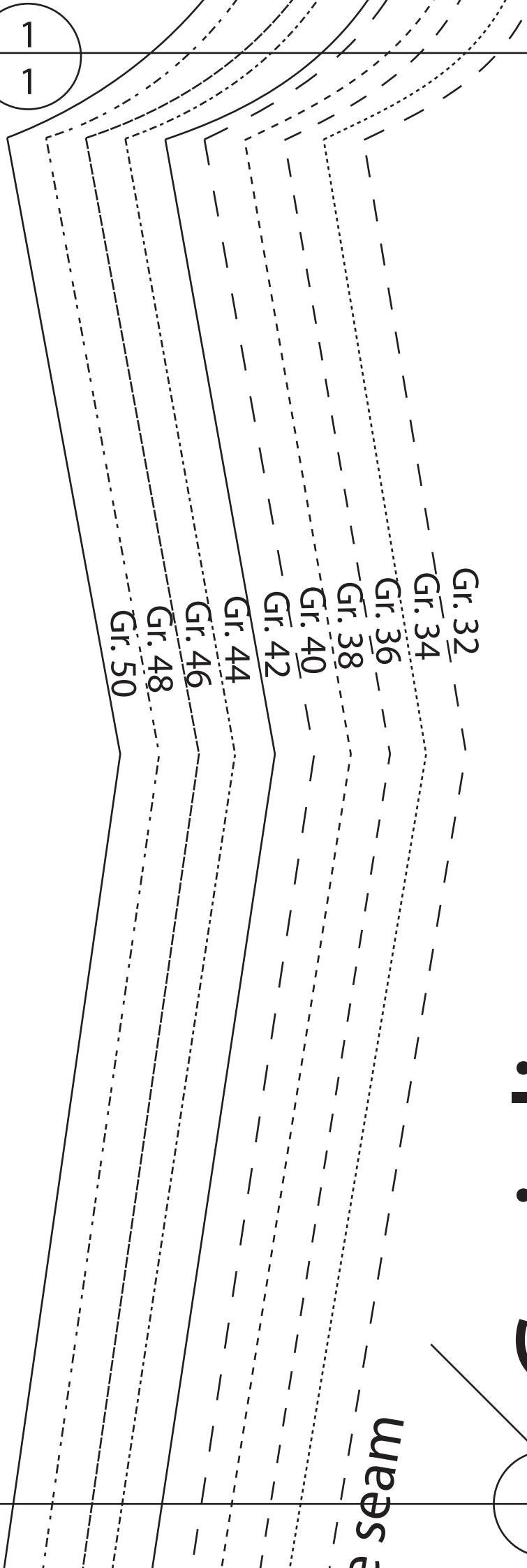
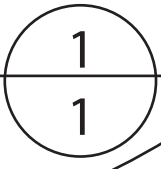
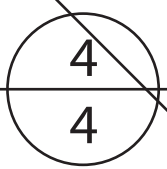


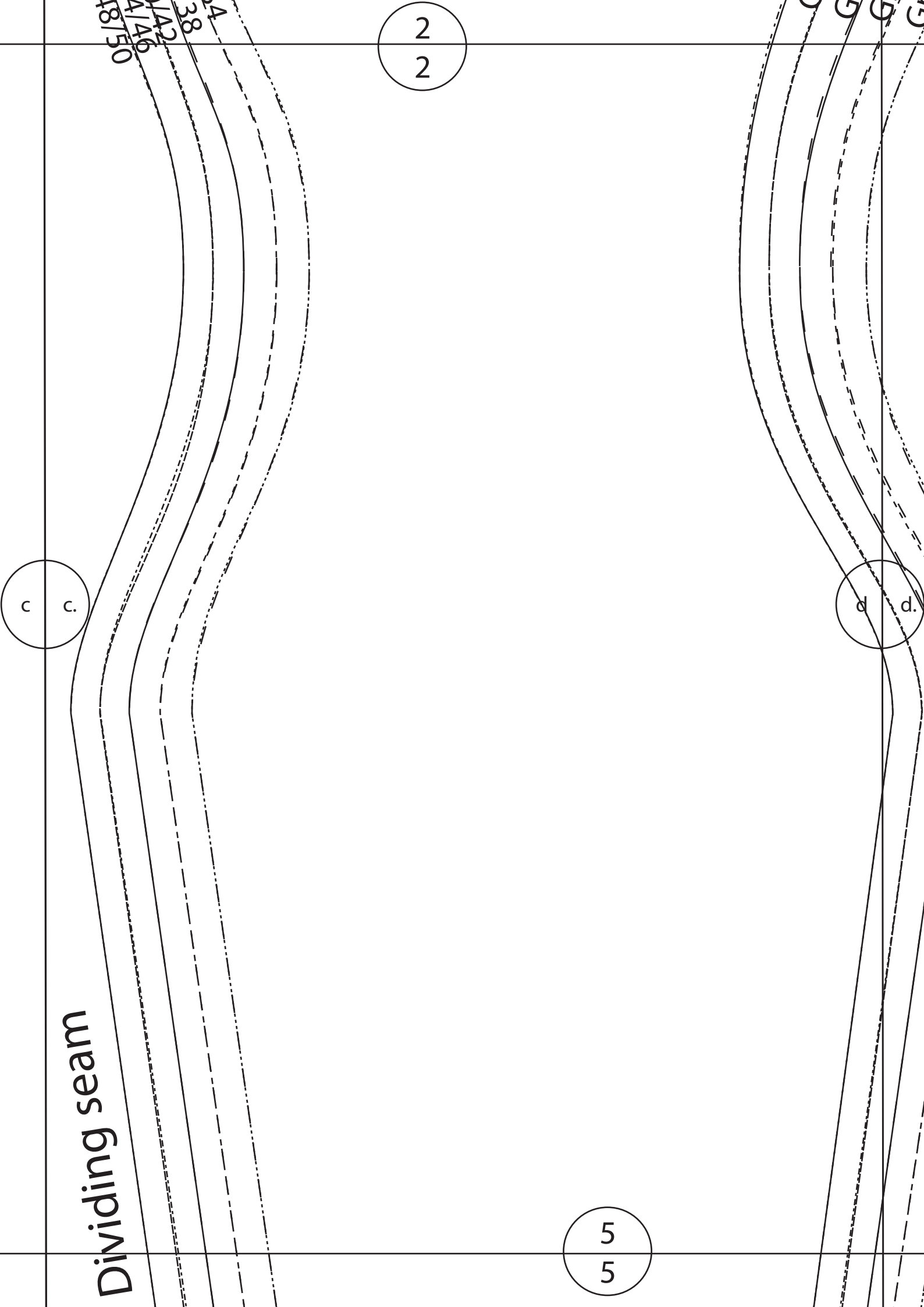


seams dupli-
cated



Grainline





Dividing seam

18/50
4/46
4/42
38
4

c

c.

2
2

5
5

d

d.

Gr.
Gr.
Gr.
Gr.

3
3

Center front

d.
d.

Grainline

Dividing seam

6
6

Side seam

4
4

SEWERA

Pully by Sewera D - F Cup

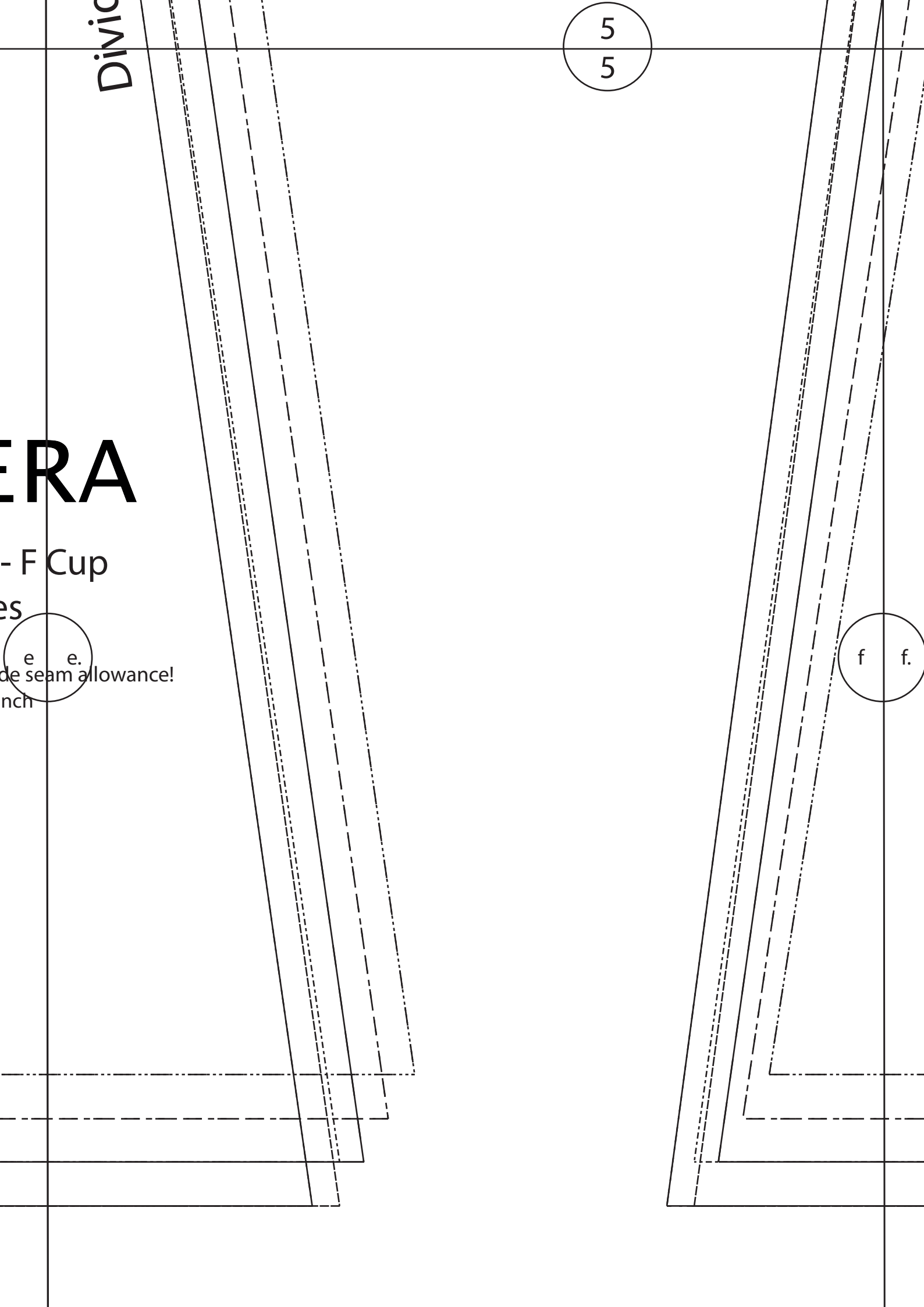
Cut 2 mirror images

Side front piece

Sewing pattern does **NOT** include seam allowance

Please add: 0.5 - 1 cm / 1/8 - 3/8 inch

Hemline: 1 - 4 cm / 3/8 - 1,5 inch



Divic

5

5

ERA

- F Cup

es

e

e.

de seam allowance!

nch

f

f.

Divi

6

6

SEWERA

Pully by Sewera D - F Cup

Cut 2 mirror images

Middle front piece

Sewing pattern does **NOT** include seam allowance!

Please add: 0.5 - 1 cm / 1/8 - 3/8 inch

Hemline: 1 - 4 cm / 3/8 - 1,5 inch

f

f.

m m.

SEW

Pully Sleeve

Cut 2 mirror images

Sewing pattern does **NOT** include seam allowance
Please add: 0.5 - 1cm / 1/8 - 3/8 inch
Hemline: 2 - 4 cm / 1 - 2 inch

13

13

The logo for VERA (Vascular Endothelial Research in Arteries) features a stylized red and grey 'V' on the left, followed by the letters 'ERA' in a bold, black, sans-serif font.

include seam allowance!
3/8 inch

front

Hemline short sleeve

Gr 50
Gr 48
Gr 46
Gr 44
Gr 42
Gr 40
Gr 38
Gr 36
Gr 34
Gr 32

14

14

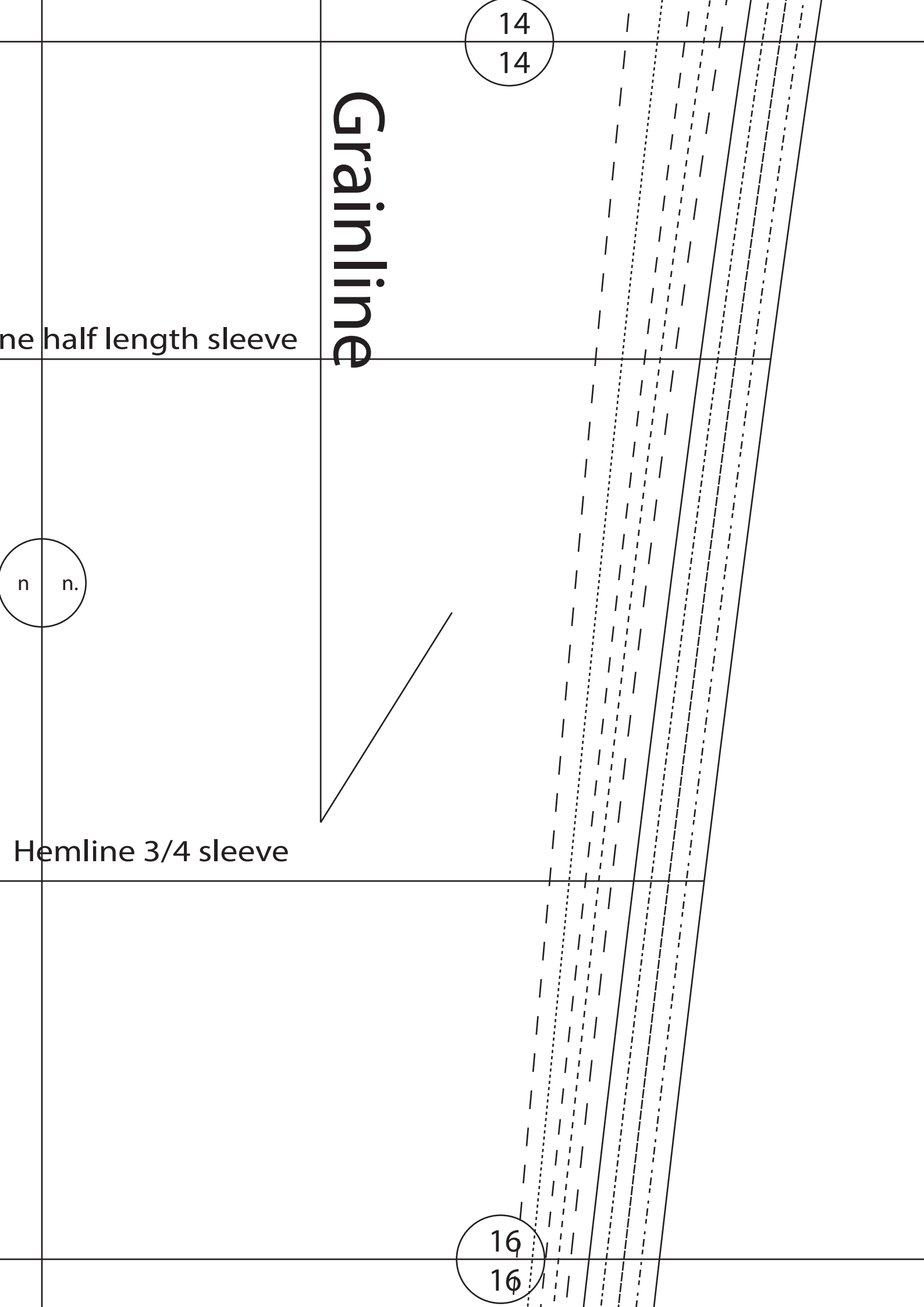
13
13

Hemline ha

n n.

Hem

15
15



14

14

Grainline

one half length sleeve

n

n.

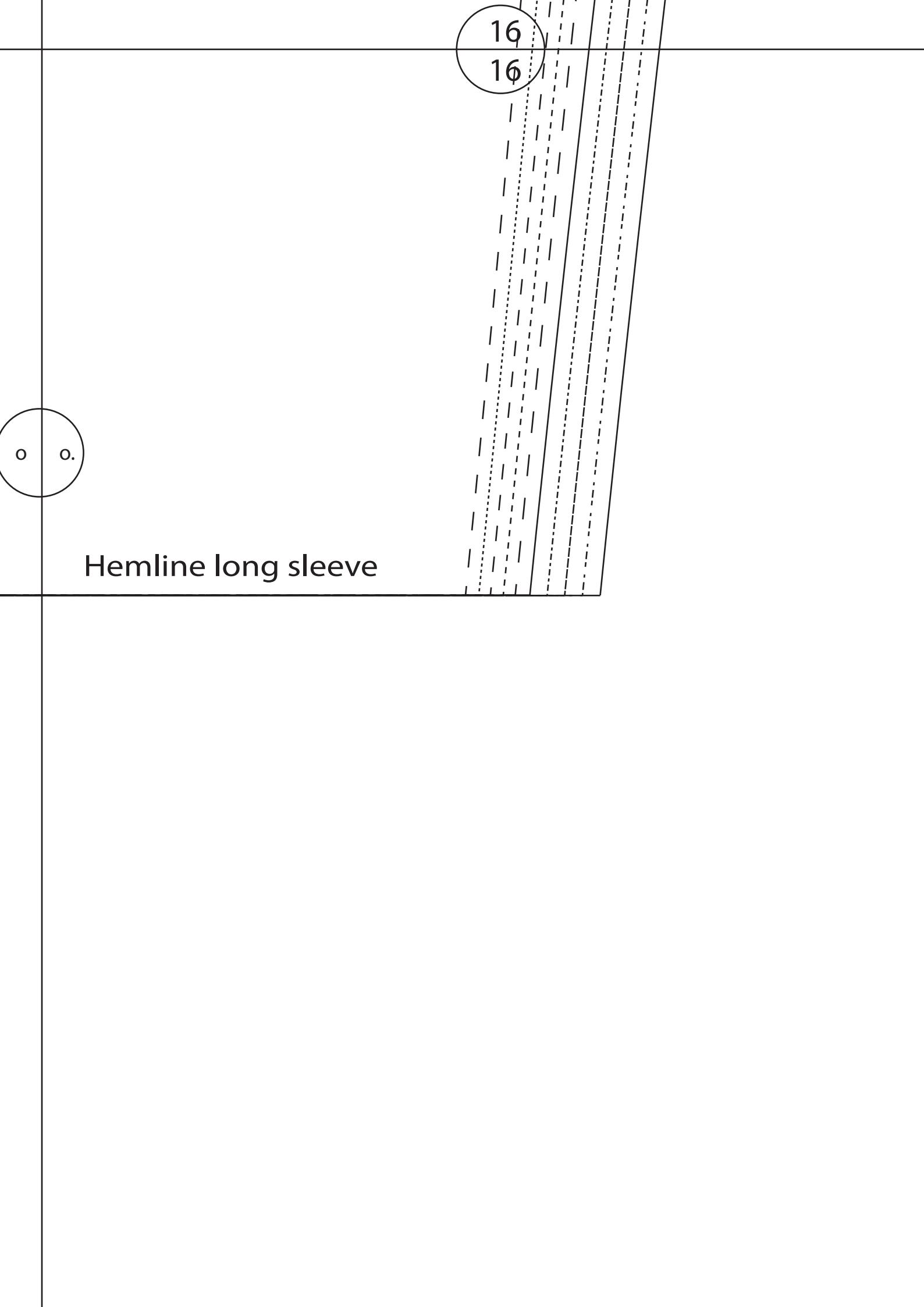
Hemline 3/4 sleeve

16

16

15
15

o o.



16

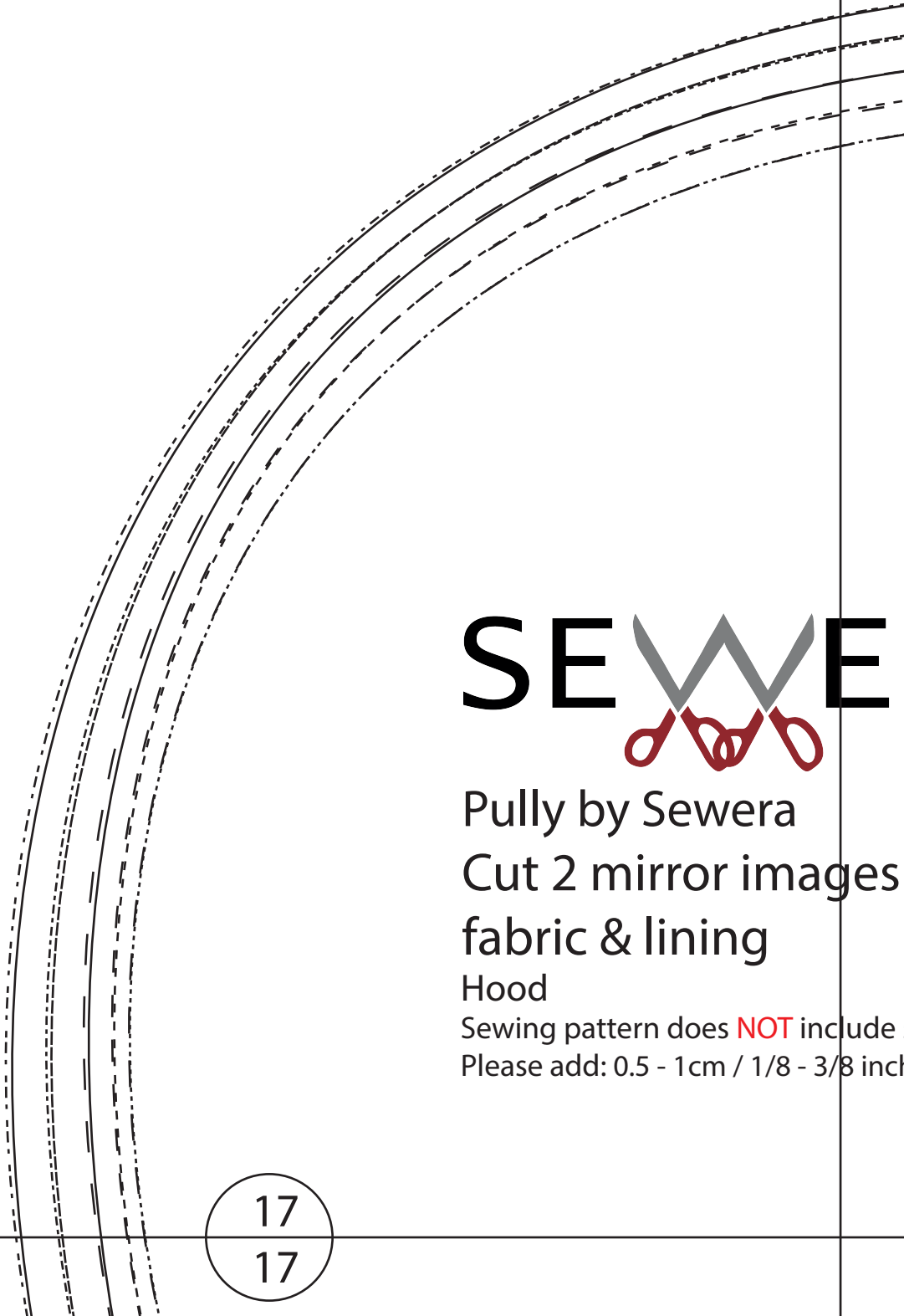
16

o

o.

Hemline long sleeve

p p.



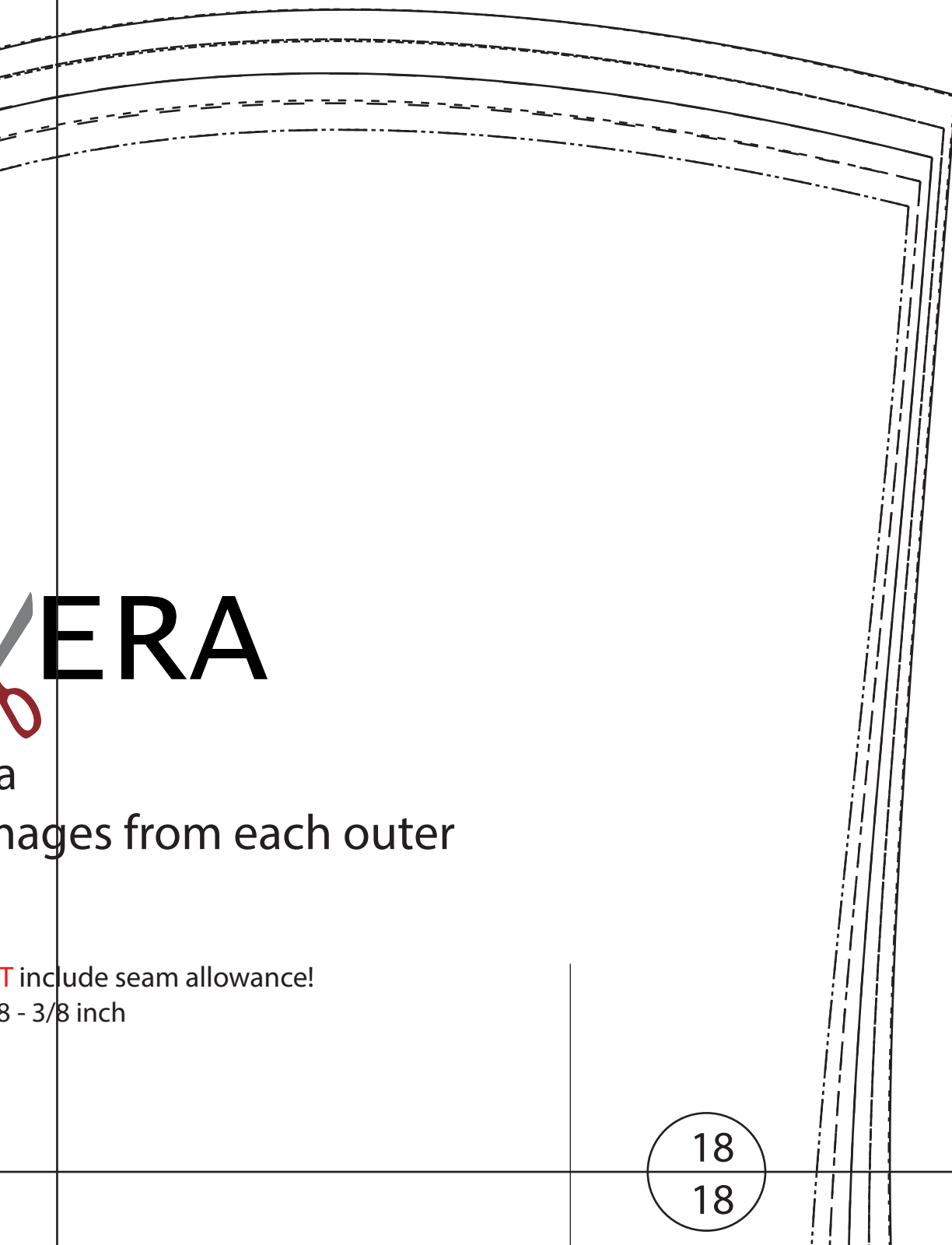
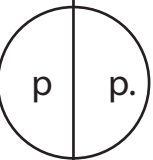
SEWE



Pully by Sewera
Cut 2 mirror images
fabric & lining

Hood
Sewing pattern does **NOT** include
Please add: 0.5 - 1cm / 1/8 - 3/8 inch

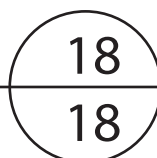
17
17



ERA

a
nages from each outer

T include seam allowance!
8 - 3/8 inch



17
17

q q.

05/48/50
Gr. 44/46
Gr. 40/42
Gr. 36/38
Gr. 32/34
Gr. 28/30

18

18

Grainline

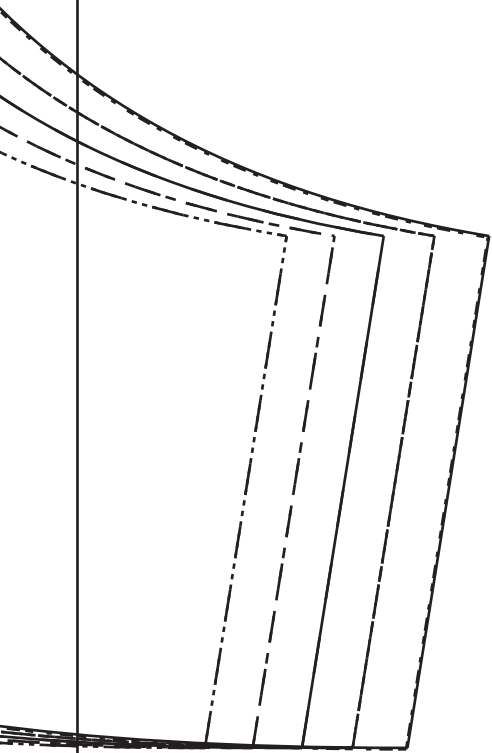
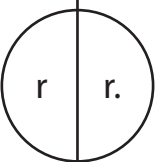
r

r.

Do **NOT** cut dart out of fabric,
only mark it!

q

q.



Second fold line for high collar

Center front / fold / grainline



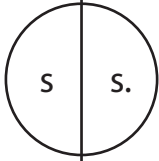
Pully by Sewera

Cut 1x on single fold or double fold
Collar

Sewing pattern does **NOT** include seam allowance!

Please add: 0.5 - 1cm / 1/8 - 3/8 inch

fold



Center back	Gr. 32/34
	Gr. 36/38
	Gr. 40/42
	Gr. 44/46
	Gr. 48/50